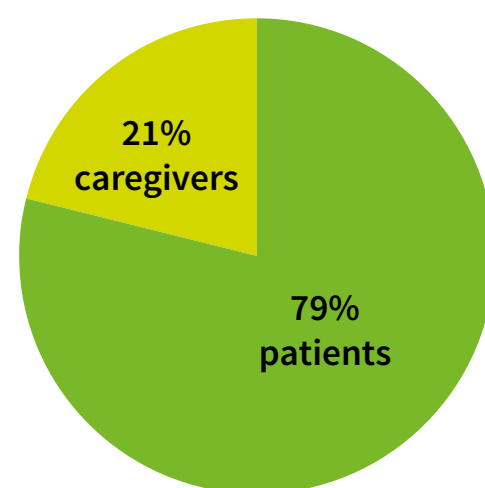


# Global Patient Survey 2020: Mapping the Kidney Cancer Patient Experience Worldwide

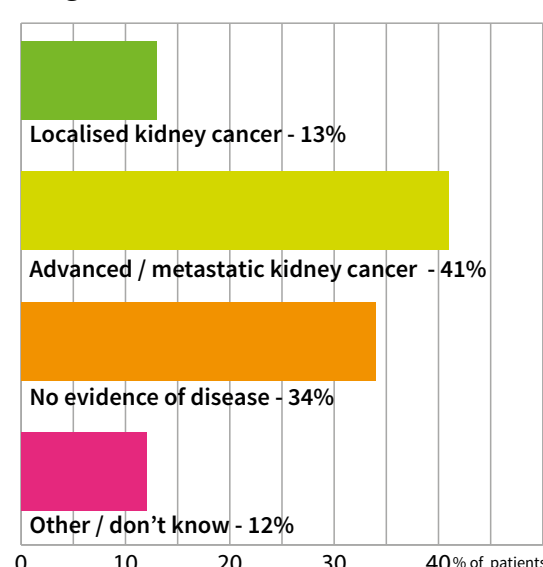
## KEY FINDINGS

The survey included **2,012** respondents in **41** countries

IKCC's Global Patient Survey is designed to identify geographic variations in patients' education, experience and awareness and highlight best practices and unmet needs related to care, quality of life and clinical trials.



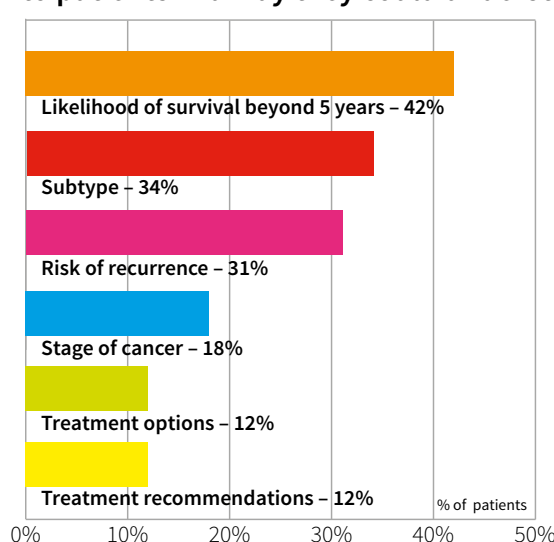
Stage of Disease



## We need to talk about: Knowledge and Understanding

*Understanding the details of their disease at diagnosis allows patients to participate in the treatment process in an informed way and help reduce the psychosocial effect of the diagnosis.*

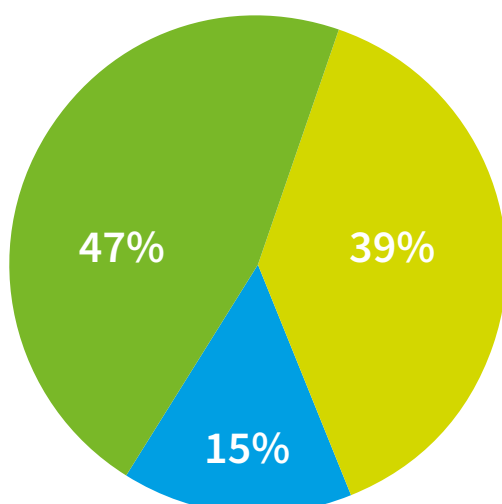
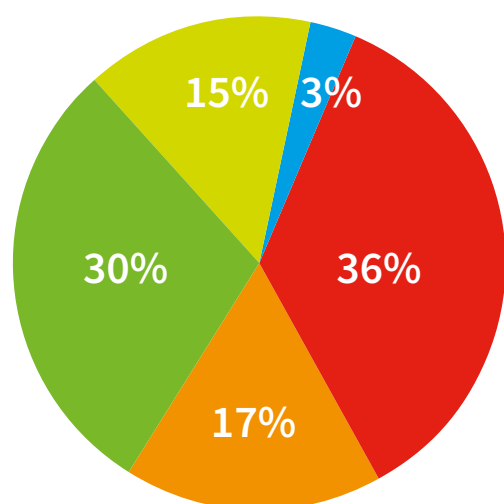
At the time of diagnosis, the following were **not** explained to patients in a way they could understand:



## We need to talk about: Biopsies

Have you been offered a biopsy?

Would you be willing to have a biopsy in the future?



*With a refusal rate of 3% and only 15% of patients saying they would refuse a biopsy in the future, there is an opportunity to offer biopsies more consistently to better understand and treat individuals' masses.*

Yes, of the kidney growth – 30%  
 Yes, another part of my body – 15%  
 Yes, but I chose not to – 3%  
 No, the tissue was examined after it was removed by surgery – 36%  
 No, I was not offered a biopsy – 17%

Yes – 47%  
 Maybe – 39%  
 No – 15%

## We need to talk about Kidney Cancer.

For more information, visit [www.IKCC.org/global-patient-survey](http://www.IKCC.org/global-patient-survey).

# Global Patient Survey 2020: Mapping the Kidney Cancer Patient Experience Worldwide

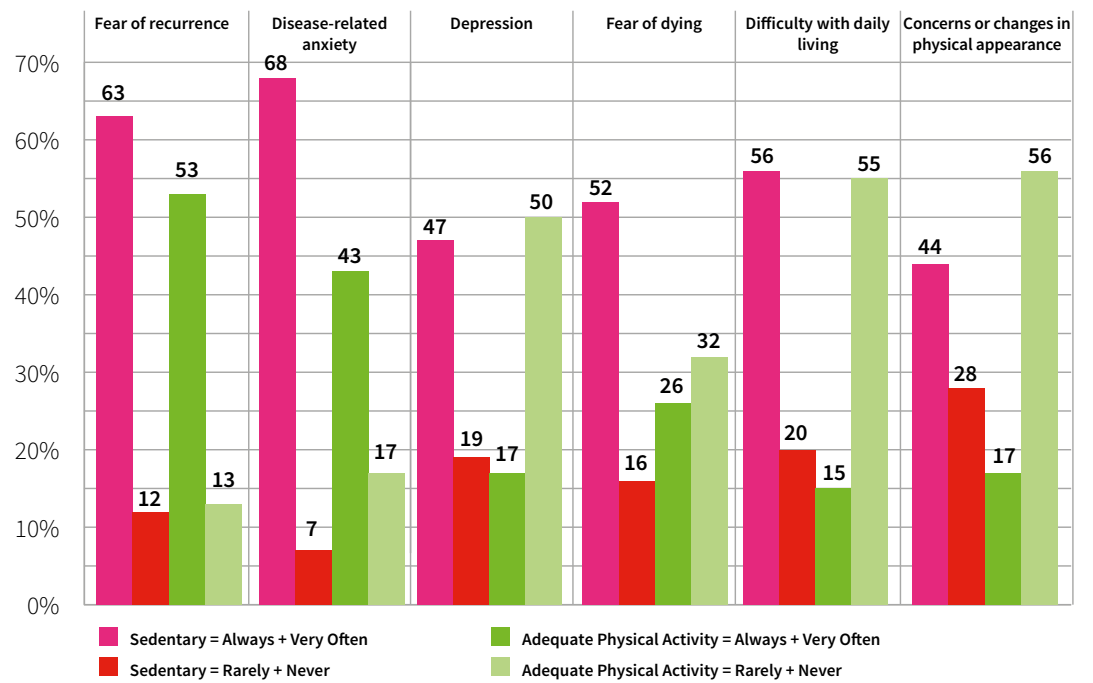
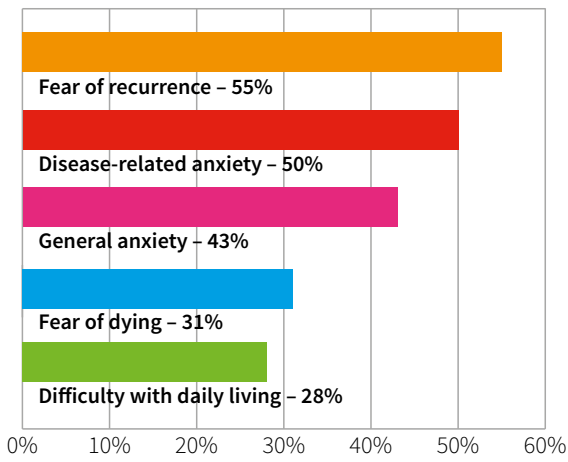
## KEY FINDINGS

### We need to talk about: **Quality of Life**

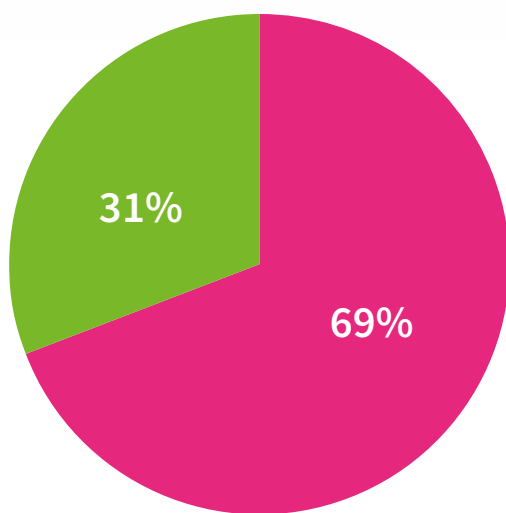
**96%** of patients are living with one or more psychosocial issues related to kidney cancer.

However, making regular exercise a part of an individual's treatment plan from diagnosis through to survivorship is a safe and effective way to manage the psychosocial impacts of cancer.

Most common psychosocial issues included:



### We need to talk about: **Clinical Trials**



Talking about clinical trials helps patients learn more about the process of advancing cancer care and be active partners in their own care.

**31%** of patients were asked to participate in a clinical trial.

**69%** of patients had never been asked to participate in a clinical trial.

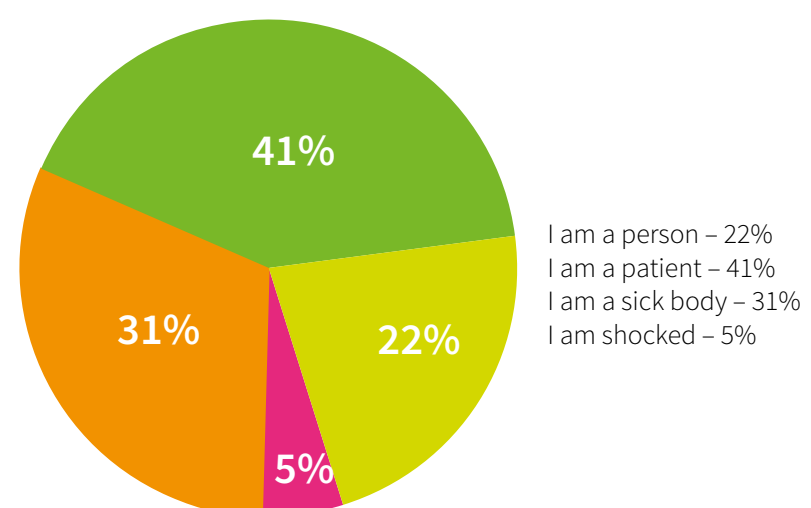
Of those asked, **62%** agreed and the majority were satisfied with their experience.

Of those, **65%** said it was likely they would have participated if they had been asked

### We need to talk about: **Patient Engagement**

The Patient Health Engagement Scale (PHE-S) developed by Università Cattolica del Sacro Cuore in Italy defines how a patient's engagement in their own health relates to how they have processed and accepted the disease.

Taking the time and effort to inform, educate and consider patients' values leads to improved outcomes overall.



## We need to talk about **Kidney Cancer**.

For more information, visit [www.IKCC.org/global-patient-survey](http://www.IKCC.org/global-patient-survey).