

# Global Patient Survey 2018: Mapping the Kidney Cancer Patient Experience Worldwide

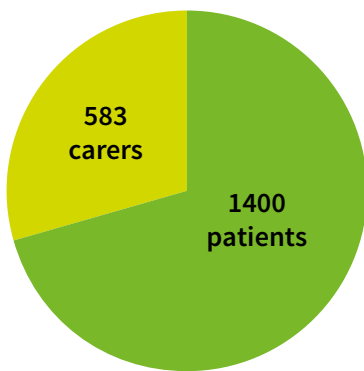
## Snapshot



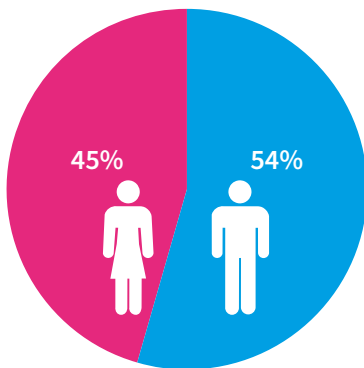
The survey included **1983** respondents in **43** countries.

The Global Patient Survey included respondents from Canada (12%), France (12%), the United States (12%), South Korea (12%), Japan (10%), the United Kingdom (9%), Mexico (7%), India (7%), Germany (6%), Brazil (3%), The Netherlands (2%), Australia (2%), Finland (2%), Other (4%).

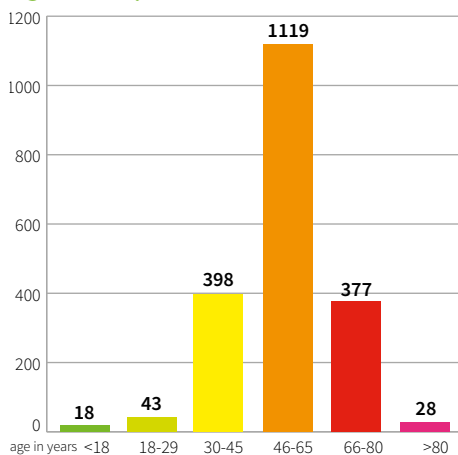
### Participants



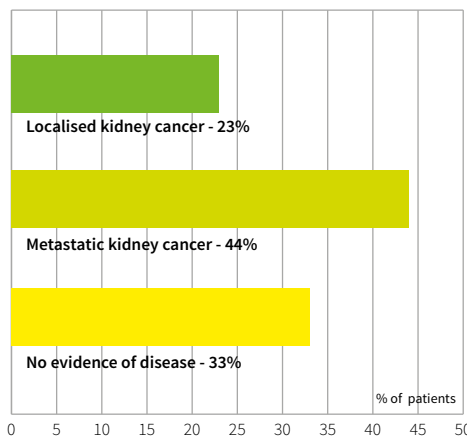
### Gender



### Age of Respondents



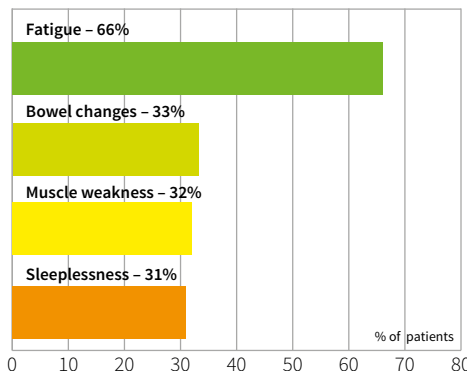
### Stage of Disease



### Physical Conditions

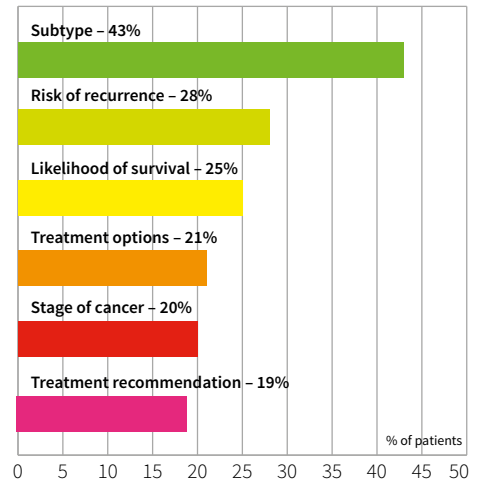
**92%** of patients said their physical well-being was impacted since the initial diagnosis.

#### Most common conditions included:



### Knowledge and Understanding

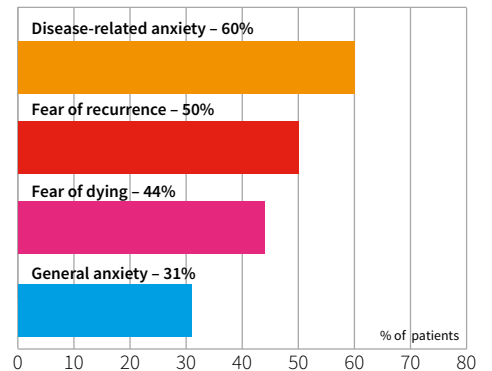
At the time of diagnosis, patients had no understanding of their:



### Psychosocial Conditions

**96%** of patients said they were impacted by psychosocial issues.

#### Most common conditions included:



# Global Patient Survey 2018: Mapping the Kidney Cancer Patient Experience Worldwide

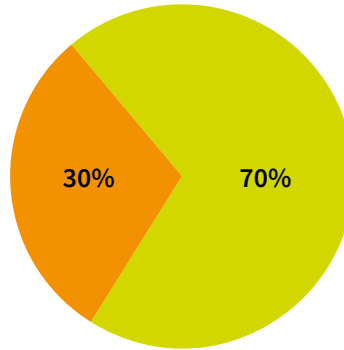
## Snapshot



### Clinical Trials

**30%** of patients were asked to participate in a clinical trial.

Of those asked, **86%** agreed and the majority were satisfied with their experience.

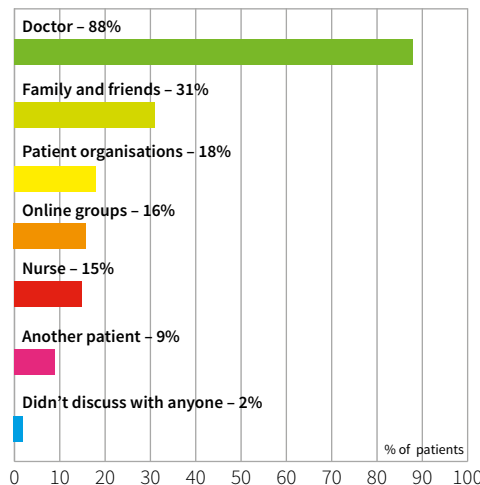


**70%** of patients had never been asked to participate in a clinical trial.

Of those, **89%** said it was fairly likely they would have participated if they had been asked.

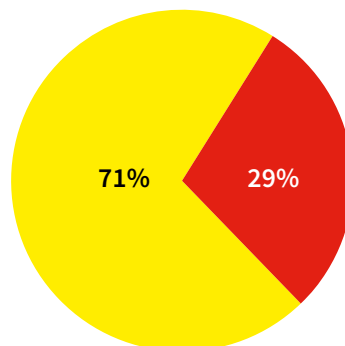
**45%** of these patients were being treated in a major cancer centre and **37%** at a local or community hospital.

### Patients discussed clinical trials with their:



### Shared Decision Making

**71%** of patients were involved in their treatment decisions to some degree.



**29%** of patients were not engaged in their treatment decisions at all.

#### Where were they treated?

Of patients who reported "my doctor decided for me" **34%** were treated in a community or local hospital and **45%** in a major cancer centre.

#### What stage was the cancer?

Patients of all stages were not involved in their treatment decisions:

- **25%** were stage 1 or 2
- **20%** were stage 3 and
- **30%** were stage 4.

For more information and the complete Global Patient Survey Reports, visit:  
[www.IKCC.org/global-patient-survey](http://www.IKCC.org/global-patient-survey).

**We need to talk about Kidney Cancer.**